

AROHA KNITS



# HUATAU CARDIGAN



A BOTTOM-UP DOLEMAN PULLOVER WITH A CENTER LACE AND CABLE STITCH PATTERN.

# PATTERN INFORMATION



## YARN

- Sport/5-ply
- Quince & Co Chickadee (100% Wool ; 181 yards / 165 metres / 50 grams)
- **Substitution info:** use an animal-based yarn with lots of elasticity and has a good amount of stitch definition so that the cables stitches can pop!
- **Yardage (approx):** 825 (850, 950, 1075, 1175, 1225, 1350, 1450, 1600, 1750, 1925, 2100, 2425) yards / 750 (775, 875, 975, 1075, 1125, 1225, 1325, 1450, 1600, 1750, 1925, 2200) meters



## NEEDLES

- US 5 (3.75mm) and US 7 (4.5mm), 32 in./80 cm circular needles *or size to obtain gauge.*



## GAUGE

- 24 sts and 32 rows over 4 in./10 cm in St. st. with larger needle and after blocking.

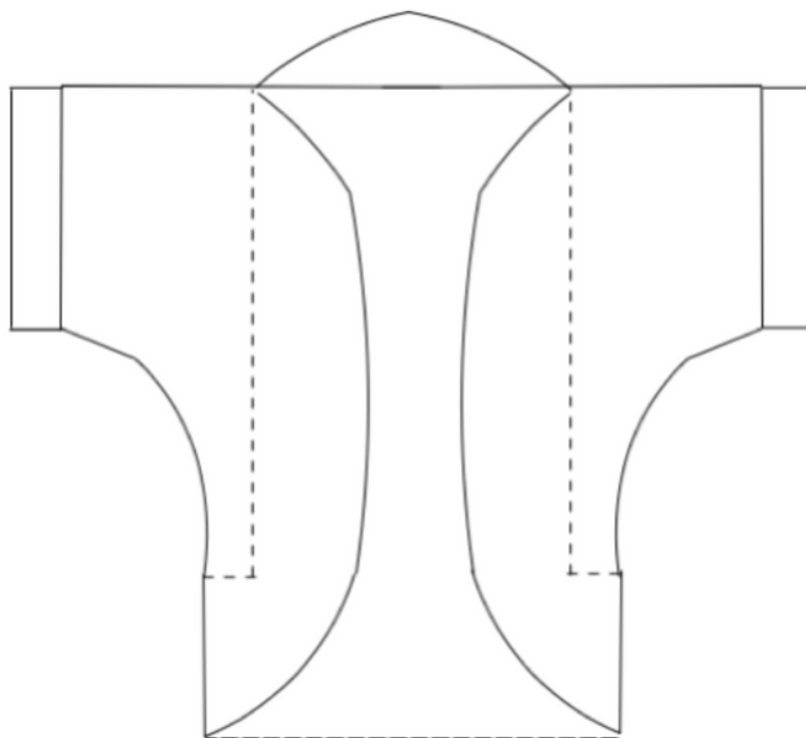


## NOTIONS

- Cable needle
- Stitch markers
- Darning needle

The Huatau (Maori for graceful) Cardigan combines simple, modern elements such as the stockinette and garter stitch with a deceptively intricate lace and cable panel on the back. A crop-length, dolman sleeve, open and breezy cardigan, it is perfect for throwing over the shoulders when a surprise chill comes through or for wearing as part of your everyday wardrobe. Airy and light, the Huatau Cardigan will make you feel fantastically whimsy.

# SCHEMATIC



	30	32	34	36	38	40	44	48	52	56	60	64	68
Back – bottom edge inches	15	16	17	18	19	20	22	24	26	28	30	31	33
cm	38	40	43	45	48	50	55	60	65	70	75	77	82
Back – top edge inches	21	23	23	24	26	26	28	29	31	33	35	37	30
cm	53	57	58	60	64	65	70	73	78	83	88	93	98
Back/Front – bottom to underarm inches	7	7	8	9	9	9	8	8	7	7	7	7	9
cm	18	18	20	22	23	22	21	20	18	18	17	18	22
Back/Front – armhole/sleeve width inches	7	7	8	8	9	9	9	10	11	11	12	13	14
cm	18	18	19	21	22	22	23	25	27	28	31	32	34
Front – bottom edge inches	2	2	2	3	3	4	5	6	6	7	8	8	9
cm	6	5	6	7	7	10	12	15	16	18	21	21	23
Front – top edge inches	5	6	6	6	6	7	7	8	9	10	11	11	12
cm	13	14	15	15	16	17	18	20	22	25	27	28	31

## Finished Measurements

**To Fit Bust:** 30 (32, 34, 36, 38, 40, 44, 48, 52, 56, 60, 64, 68)'' / 75 (80, 85, 90, 95, 100, 110, 120, 130, 140, 150, 160, 170) cm

**Sleeve to sleeve length:** 23 (24.5, 25, 26, 27.5, 28, 30, 31, 33, 35, 37, 39, 41)'' / 57.5 (61.5, 62.5, 65, 69, 70, 75, 77.5, 82.5, 87.5, 92.5, 97.5, 102.5) cm

**Sleeve Circumference:** 14 (14, 15, 16.5, 17, 17.5, 18.5, 20, 21.5, 22.5, 24.5, 25.5, 27)'' / 35 (35, 37.5, 41.5, 42.5, 44, 46.5, 50, 54, 56.5, 61.5, 64, 67.5) cm

# BEFORE YOU CAST ON

Please take a moment to give the entire pattern a read-through to understand the layout and flow of the instructions. Written and charted instructions of the stitches used in the pattern are found on pages 8-9.

## ABBREVIATIONS

approx - approximately

beg - beginning

CO - cast on

CN - cable needle

k- knit

p - purl

pm - place marker

sm - slip marker

m1-l - make one left

m1-r - make one right

k2tog - knit two together ssk - slip slip knit

yo - yarn over

3/3 RC - slip three sts to cable needle, hold in back, k3, then k3 from CN

3/3 LC - slip three sts to cable needle, hold in front, k3, then k3 from CN

st st - stockinette stitch

st(s) - stitch(es)

sm - slip marker

rep - repeat

RS - right side

WS - wrong side

est - established

rnd - round

W&T - wrap and turn, give a description



# PATTERN

## BACK

With larger needle, CO\* 92 (98, 104, 110, 116, 122, 134, 146, 158, 170, 182, 186, 198) sts. PM at 25 (28, 31, 34, 37, 40, 46, 52, 58, 64, 70, 72, 78) sts and 67 (70, 73, 76, 79, 82, 88, 94, 100, 106, 112, 114, 120) sts — 42 sts between markers.

*\*Optional: Use the provisional cast on method instead of the long tail cast on to avoid picking up stitches later on.*

**RS rows:** K until marker, sm, work Lace Chart (starting from row 1), sm, k until end of row.

**WS rows:** K1, p until marker, sm, work Lace Chart, sm, p until last stitch, k1.

Starting on row 13 (7, 19, 25, 23, 25, 21, 19, 15, 13, 9, 9, 1), work [k2, m1-r, work pattern until last two sts, m1-l, k2] (2 sts increased). Rep this every 4th (4th, 4th, 4th, 4th, 4th, 4th, 6th, 6th, 6th, 6th, 4th, 6th) row 8 (9, 8, 8, 9, 8, 8, 5, 5, 5, 5, 9, 9) more times before moving onto the next steps below.

**St Count:** 110 (118, 122, 128, 136, 140, 152, 158, 170, 182, 194, 206, 218)

### *Size 32 only*

On the next fourth row, work [k2, m1-r, k2, m1-r, work pattern until last four sts, m1-l, k2, m1-l, k2] (4 sts increased). Rep double increases every other row 3 more times. End on a WS row.

### *All other sizes*

Every other row, work [k2, m1-r, k2, m1-r, work pattern until last four sts, m1-l, k2, m1-l, k2] (4 sts increased). Rep 4 times total. End on a WS row .

**St Count:** 126 (134, 138, 144, 152, 156, 168, 174, 185, 198, 210, 222, 234)

View the table on page 10 to help keep track of row and stitch #'s.

### *All sizes*

Work pattern as est. another 54 (54, 58, 62, 64, 66, 70, 76, 82, 86, 92, 96, 102) rows. Place sts on a stitch holder or scrap yarn.

## RIGHT FRONT

Using larger needles, CO 14 (15, 17, 19, 20, 23, 27, 34, 38, 44, 50, 50, 56) sts.

**RS rows:** K all sts.

**WS rows:** K1, p until last st, k1.

Starting on row 13 (7, 19, 25, 23, 25, 21, 19, 15, 13, 9, 9, 1), work pattern until last two sts, [m1-l, k2] (1 st increased). Rep this every 4th (4th, 4th, 4th, 4th, 4th, 4th, 6th, 6th, 6th, 6th, 4th, 6th) row 8 (9, 8, 8, 9, 8, 8, 5, 5, 5, 5, 9, 9) more times before moving onto the next steps below.

**St count:** 23 (25, 26, 28, 30, 32, 36, 40, 44, 50, 56, 60, 66)

### *Size 32 only*

On the next fourth row, work pattern until last four sts, [m1-l, k2, m1-l, k2] (2 sts increased). Rep. this double increase every other row 3 more times. End on a WS row.

### *All other sizes*

Every other row, work pattern until last four sts, [m1-l, k2, m1-l, k2] (2 sts increased). Rep 4 times total. End on a WS row.

**St count:** 31 (33, 34, 36, 38, 40, 44, 48, 52, 58, 64, 68, 74)

View the table on page 11 to help keep track of row and stitch #'s.

### *All sizes*

Work pattern as est. another 54 (54, 58, 62, 64, 66, 70, 76, 82, 86, 92, 96, 102) rows. Place sts on a stitch holder or scrap yarn.

# PATTERN

## LEFT FRONT

Using larger needles, CO 14 (15, 17, 19, 20, 23, 27, 34, 38, 44, 50, 50, 56) sts.

**RS rows:** K all stitches.

**WS rows:** K1, p until last st, k1.

Starting on row 13 (7, 19, 25, 23, 25, 21, 19, 15, 13, 9, 9, 1), [k2, m1-r, work pattern] (1 st increased).

Repeat this every 4th (4th, 4th, 4th, 4th, 4th, 4th, 6th, 6th, 6th, 6th, 4th, 6th) row 8 (9, 8, 8, 9, 8, 8, 5, 5, 5, 5, 9, 9) more times before moving onto the next steps below.

**St count:** 23 (25, 26, 28, 30, 32, 36, 40, 44, 50, 56, 60, 66)

### Size 32 only

On the next fourth row, [k2, m1-r, k2, m1-r, work pattern] (2 sts increased). Rep. this double increase every other row 3 more times. End on a WS row.

### All other sizes

Every other row, [k2, m1-r, k2, m1-r, work pattern] (2 sts increased). Rep 4 times total. End on a WS row..

**St count:** 31 (33, 34, 36, 38, 40, 44, 48, 52, 58, 64, 68, 74)

View the table on page 11 to help keep track of row and stitch #'s.

### All sizes

Work pattern as est. another 54 (54, 58, 62, 64, 66, 70, 76, 82, 86, 92, 96, 102) rows. Place sts on a stitch holder or scrap yarn.

## BINDING OFF

Use the three needle BO to seam the front pieces to the back at shoulders – 31 (33, 34, 36, 38, 40, 44, 48, 52, 58, 64, 68, 74) sts for each shoulder. BO the 64 (68, 70, 72, 76, 76, 80, 78, 82, 82, 82, 86, 86) sts of the middle section.

*Optional: slip these middle sts of the back panel onto a stitch holder or long circular needle to avoid picking up these stitches later on.*

## SEAMING

Seam the sides starting from the bottom of garment until the underarms using the mattress stitch.

## SLEEVE BANDS

Using smaller 16in. / 40 cm needle, starting at underarm seam, pick up 52 (52, 56, 60, 62, 64, 68, 74, 80, 84, 90, 94, 100) sts on each side. Work (k1, p1) ribbing for 1" / 2.5 cm. BO using the tubular bind off. Rep for the next sleeve.

## COLLAR

On smaller 32 in. / 80 cm needle, starting at the center back of the top of the garment and RS facing, pick up 32 (34, 35, 36, 38, 38, 40, 39, 41, 4,1, 41, 43, 43) sts, pm (this is marker 1), 81 (81, 91, 98, 101, 99, 99, 101, 102, 104, 105, 113, 125) sts on the side of the left front, pm (marker 2), 116 (124, 134, 144, 152, 164, 184, 210, 230, 254, 278, 282, 306) sts along the bottom edge\*, pm (marker 3), 81 (81, 91, 98, 101, 99, 99, 101, 102, 104, 105, 113, 125) sts on the side of the right front, pm (marker 4), 32 (34, 35, 36, 38, 38, 40, 39, 41, 4,1, 41, 43, 43) sts to the center back again, pm (beginning of rnd marker) and join to work in the rnd.

**Total sts:** 342 (354, 386, 412, 430, 438, 462, 490, 516, 544, 570, 594, 642).

*\*Note: you'll be picking up 3 sts for every 4 rows on the sides, and 1 st for every stitch on the bottom and top. If you don't pick up the same amount of sts on the bottom and top edges, it is not a big deal. However on the sides, it is crucial to pick up that amount of sts in order to work the short rows later on.*

Work garter stitch in the rnd (1 rnd knit and 1 rnd purl) with the smaller needle for 2 in. / 5 cm. End completing a purl round.

# PATTERN

## NECK SHORT ROW SHAPING

Knit from the beginning of the row until 7 (8, 8, 8, 8, 8, 9, 9, 9, 9, 9, 9, 9) sts before marker 1. W&T and knit until 7 (8, 8, 8, 8, 8, 9, 9, 9, 9, 9, 9, 9) sts before marker 4.

\* W&T and knit until 7 (8, 8, 8, 8, 8, 9, 9, 9, 9, 9, 9, 9) sts before last W&T stitch. Rep from \* 5 more times, W&T, then k all stitches.

## FRONT FACING SHAPING

Switch to larger sized needles, knit from the beg of the row until 3 sts from marker 4. W&T and knit until 3 sts from marker 1.

\* W&T and knit until 3 sts from last wrap. W&T and knit until 3 sts from last wrap. \*

Rep between \* and \* 7 (7, 7, 8, 8, 9, 9, 9, 9, 9, 10, 11) more times (there will be 9 (9, 9, 10, 10, 11, 11, 11, 11, 11, 11, 12, 13) wraps on each side).

On last wrap you will be between markers 1 and 2. Knit to beg of the rnd - there is no need to pick up the wraps between markers 3 and 4. Purl one round - pick up the wraps between markers 1 and 2 if you are getting holes on the purl round.

## FINISHING

Use the I-cord bind off and wash and block again. Lay flat to dry. Weave in ends.





# STITCH PATTERNS

## LACE PATTERN

**Row 1 (RS):** P1, k6, p2, k4, k2tog, k2, yo, k5, yo, k2, ssk, k2, yo, k2, ssk, k1, p2, k6, p1.

**Row 2 and all WS rows:** P all purl and yo sts, k all knit sts.

**Row 3:** P1, 3/3 RC, p2, k3, k2tog, k2, yo, k2, k2tog, k2, yo, k1, yo, k2, ssk, k2, yo, k2, ssk, p2, 3/3 LC, p1.

**Row 5:** P1, k6, p2, \*k2, k2tog, k2, yo\* x 2, k3, yo, k2, ssk, k5, p2, k6, p1.

**Row 7:** P1, k6, p2, k1, k2tog, k2, yo, k2, k2tog, k2, yo, k5, yo, k2, ssk, k4, p2, k6, p1.

**Row 9:** P1, k6, p2, k2tog, k2, yo, k2, k2tog, k2, yo, k1, yo, k2, ssk, k2, yo, k2, ssk, k3, p2, k6, p1.

**Row 11:** P1, 3/3 RC, p2, k5, k2tog, k2, yo, k3, \*yo, k2, ssk, k2\* x 2, p2, 3/3 LC, p1.

**Row 13:** P1, k6, p2, k4, k2tog, k2, yo, k5, yo, k2, ssk, k2, yo, k2, ssk, k1, p2, k6, p1.

**Row 15:** P1, k6, p2, k3, k2tog, k2, yo, k2, k2tog, k2, yo, k1, yo, k2, ssk, k2, yo, k2, ssk, p2, k6, p1.

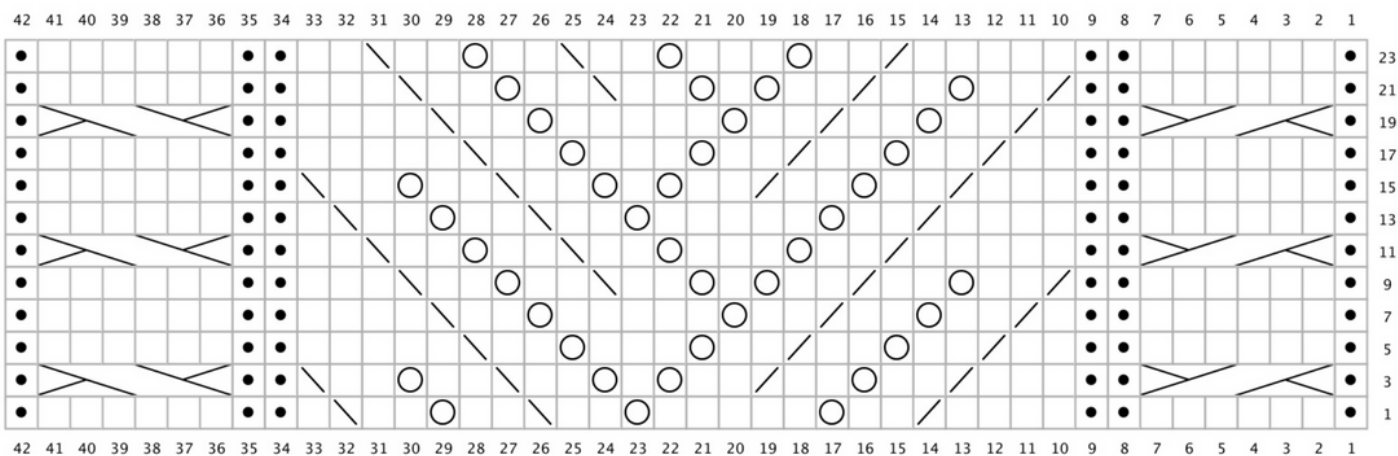
**Row 17:** P1, k6, p2, \*k2, k2tog, k2, yo\* x 2, k3, yo, k2, ssk, k5, p2, k6, p1.

**Row 19:** P1, 3/3 RC, p2, k1, k2tog, k2, yo, k2, k2tog, k2, yo, k5, yo, k2, ssk, k4, p2, 3/3 LC, p1.








**Row 21:** P1, k6, p2, k2tog, k2, yo, k2, k2tog, k2, yo, k1, yo, k2, ssk, k2, yo, k2, ssk, k3, p2, k6, p1.

**Row 23:** P1, k6, p2, k5, k2tog, k2, yo, k3, \*yo, k2, ssk, k2\* x 2, p2, k6, p1.

**Row 24:** P all purl and yo stitches, k all knit stitches.



### Key

-  knit
-  RS: purl  
WS: knit
-  RS: k2tog  
WS: p2tog
-  RS: ssk  
WS: p2tog tbl
-  yo
-  3/3 LC
-  3/3 RC

# STITCH COUNT TABLES

## BACK INCREASES

30		32		34		36		38	
Row	Stitches	Row	Stitches	Row	Stitches	Row	Stitches	Row	Stitches
13	94	7	100	19	106	25	112	23	118
17	96	11	102	23	108	29	114	27	120
21	98	15	104	27	110	33	116	31	122
25	100	19	106	31	112	37	118	35	124
29	102	23	108	35	114	41	120	39	126
33	104	27	110	39	116	45	122	43	128
37	106	31	112	43	118	49	124	47	130
41	108	35	114	47	120	53	126	51	132
45	110	39	116	51	122	57	128	55	134
47	114	43	118	53	126	59	132	59	136
49	118	47	122	55	130	61	136	61	140
51	122	49	126	57	134	63	140	63	144
53	126	51	130	59	138	65	144	65	148
		53	134					67	152

40		44		48		52		56	
Row	Stitches	Row	Stitches	Row	Stitches	Row	Stitches	Row	Stitches
25	124	21	136	19	148	15	160	13	172
29	126	25	138	25	150	21	162	19	174
33	128	29	140	31	152	27	164	25	176
37	130	33	142	37	154	33	166	31	178
41	132	37	144	43	156	39	168	37	180
45	134	41	146	49	158	45	170	43	182
49	136	45	148	51	162	47	174	45	186
53	138	49	150	53	166	49	178	47	190
57	140	53	152	55	170	51	182	49	194
59	144	55	156	57	174	53	186	51	198
61	148	57	160						
63	152	59	164						
65	156	61	168						

60		64		68	
Row	Stitches	Row	Stitches	Row	Stitches
9	184	9	188	1	200
15	186	13	190	7	202
21	188	17	192	13	204
27	190	21	194	19	206
33	192	25	196	25	208
39	194	29	198	31	210
41	198	33	200	37	212
43	202	37	202	43	214
45	206	41	204	49	216
47	210	45	206	55	218
		47	210	57	222
		49	214	59	226
		51	218	61	230
		53	222	63	234

# STITCH COUNT TABLES

## FRONT INCREASES

30		32		34		36		38	
Row	Stitches	Row	Stitches	Row	Stitches	Row	Stitches	Row	Stitches
13	15	7	16	19	18	25	20	23	21
17	16	11	17	23	19	29	21	27	22
21	17	15	18	27	20	33	22	31	23
25	18	19	19	31	21	37	23	35	24
29	19	23	20	35	22	41	24	39	25
33	20	27	21	39	23	45	25	43	26
37	21	31	22	43	24	49	26	47	27
41	22	35	23	47	25	53	27	51	28
45	23	39	24	51	26	57	28	55	29
47	25	43	25	53	28	59	30	59	30
49	27	47	27	55	30	61	32	61	32
51	29	49	29	57	32	63	34	63	34
53	31	51	31	59	34	65	36	65	36
		53	33					67	38

40		44		48		52		56	
Row	Stitches	Row	Stitches	Row	Stitches	Row	Stitches	Row	Stitches
25	24	21	28	19	35	15	39	13	45
29	25	25	29	25	36	21	40	19	46
33	26	29	30	31	37	27	41	25	47
37	27	33	31	37	38	33	42	31	48
41	28	37	32	43	39	39	43	37	49
45	29	41	33	49	40	45	44	43	50
49	30	45	34	51	42	47	46	45	52
53	31	49	35	53	44	49	48	47	54
57	32	53	36	55	46	51	50	49	56
59	34	55	38	57	48	53	52	51	58
61	36	57	40						
63	38	59	42						
65	40	61	44						

60		64		68	
Row	Stitches	Row	Stitches	Row	Stitches
9	51	9	51	1	57
15	52	13	52	7	58
21	53	17	53	13	59
27	54	21	54	19	60
33	55	25	55	25	61
39	56	29	56	31	62
41	58	33	57	37	63
43	60	37	58	43	64
45	62	41	59	49	65
47	64	45	60	55	66
		47	62	57	68
		49	64	59	70
		51	66	61	72
		53	68	63	74



ΔΡΟΗΔ ΚΝΙΤΣ  
TRANSFORM YOUR YARN