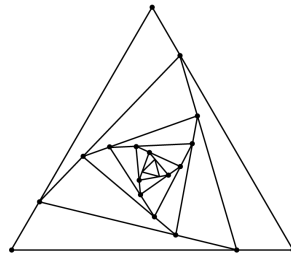




THE
EXPLORER'S
SHAWL



AROHA KNITS
TRANSFORM YOUR YARN



“WE NEED THE TONIC OF WILDNESS...AT THE SAME TIME THAT WE ARE EARNEST TO EXPLORE AND LEARN ALL THINGS, WE REQUIRE THAT ALL THINGS BE MYSTERIOUS AND UNEXPLORABLE, THAT LAND AND SEA BE INDEFINITELY WILD, UNSURVEYED AND UNFATHOMED BY US BECAUSE UNFATHOMABLE. WE CAN NEVER HAVE ENOUGH OF NATURE.”

— HENRY DAVID THOREAU



ABOUT

The Explorer's Shawl is a top-down triangular shawl that features my favorite textured stitch ever, which I like to use when stockinette or garter stitch might be a bit too monotonous. It still provides a sense of rhythm and meditation, perfect for getting completely immersed, and is easy to memorize, which works well when you just want to relax, knit, and watch your favorite TV show or movie.

As the name suggests, this is a pattern perfect for the Seeker Fibre Muse, or anyone wanting to evoke their inner Explorer or adventurer, with its textured body that plays like tree bark, and lace border resembling ferns in the gully. I always like to associate exploration with bandanas—for some reason cowboys come to mind, maybe it's because I grew up in Texas—hence why I chose the triangular shawl shaping for this design. I highly suggest picking out some natural colors for knitting up this design, to really connect it to nature and the great outdoors.

Needle Size: US 5 (3.5mm) 32" circular needle. A long circular needle is recommended in order to accommodate the large number of stitches.

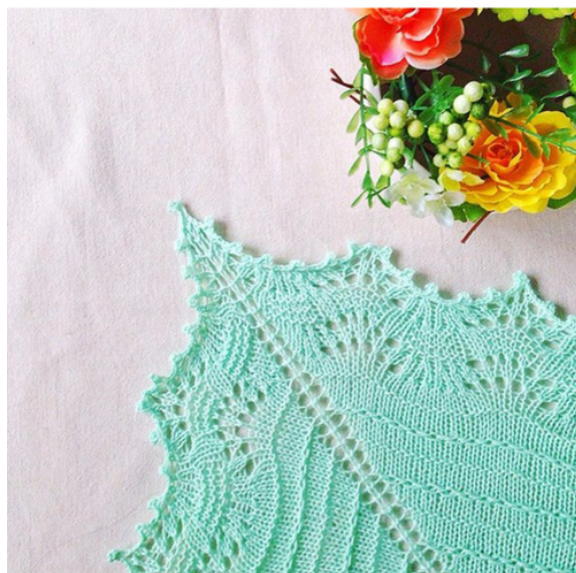
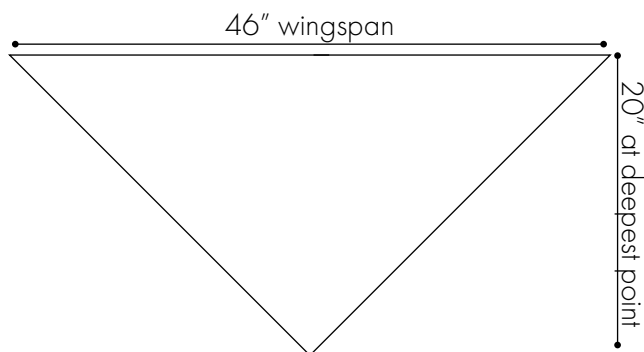
Yarn Used: We Love Knitting 100% extra fine merino, 19 micron, 4ply fingering, approximately 400m (437 yards)

Gauge: 24 sts and 40 rows = 4 inches in textured st, after blocking.

Gauge is not crucial to this project but varying gauges will effect the amount of yarn used and final measurements.

Notions: Removable stitch markers, darning needle.

Final Measurements:





STITCH ABBREVIATIONS

K - knit

P - purl

Sl - slip stitch purl wise with yarn in back

Sl wyif - slip stitch purl wise with yarn in front

Yo - yarn over

K2tog - knit two together

Ssk - slip slip knit

Rep - repeat

Mult - multiple

St(s) - stitch(es)

CO - cast-on

BO - bind-off

PM - place marker

SM - slip marker

M - marker

RS - right side

WS - wrong side

PATTERN STITCHES

Textured Pattern

Row 1 (RS): Yo, k until m, yo.

Row 2 (WS): P all stitches.

Row 3: Yo, k until m, yo.

Row 4: P all stitches.

Row 5: Yo, k until m, yo.

Row 6: K all stitches

Row 7: Yo, k until m, yo.

Row 8: P all stitches.

Row 9: Yo, k until m, yo.

Row 10: P all stitches.

Row 11: Yo, *p1, sl wyif*; rep from * until 1 st from m, p1, yo.

Row 12: *K1, sl*; rep from * until 1 st from m, k1.

Lace Edging

Row 1 (RS): Yo, *ssk x 3, (yo, k1) x 5, yo, k2tog x 3; rep from * until end, yo.

Row 2 and all WS rows: Purl.

Row 3: Yo, k1, *ssk x 3, (yo, k1) x 5, yo, k2tog x 3; rep from * until last st, k1, yo.

Row 5: Yo, p2, *p3, k3, p5, k3, p3; rep from * until last 2 sts, p2, yo.

Row 7: Yo, k1, p2, *p3, k3, p5, k3, p3; rep from * until last 3 sts, p2, k1, yo.

Row 9: Yo, k2, p2, *p3, k3, p5, k3, p3; rep from * until last 4 sts, p2, k2, yo.

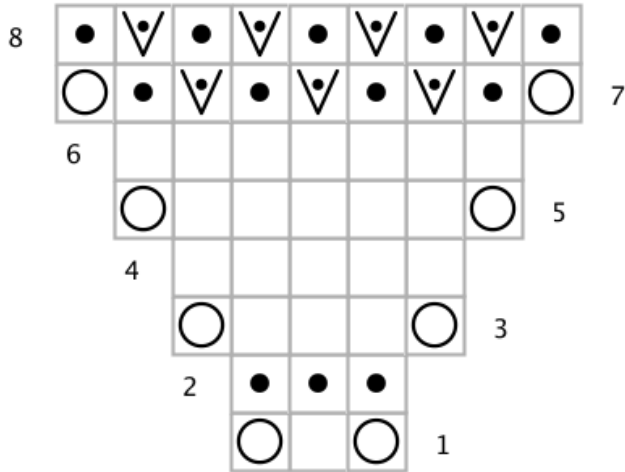
Row 11: Yo, k2, yo, k1, k2tog, *ssk x 3, (yo, k1) x 5, yo, k2tog x 3; rep from * until last 5 sts, ssk, k1, yo, k2, yo.

Row 13: (Yo, k1) x 2, yo, k2tog x 2, *ssk x 3, (yo, k1) x 5, yo, k2tog x 3; rep from * until last 6 sts, ssk x 2, (yo, k1) x 2, yo.

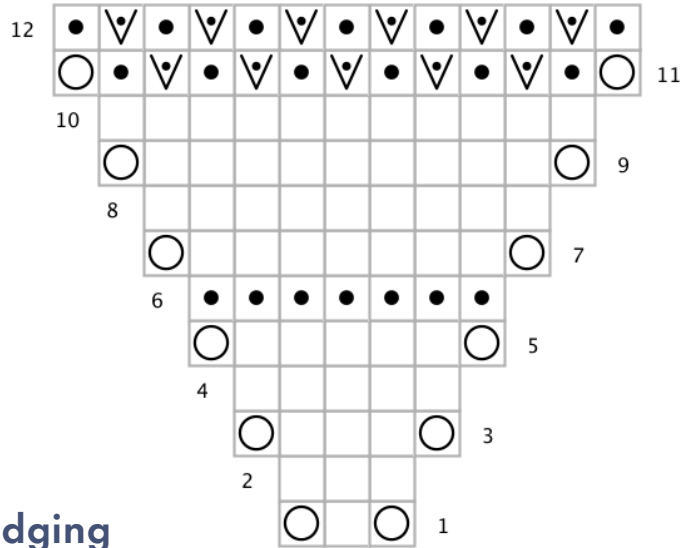


CHARTS

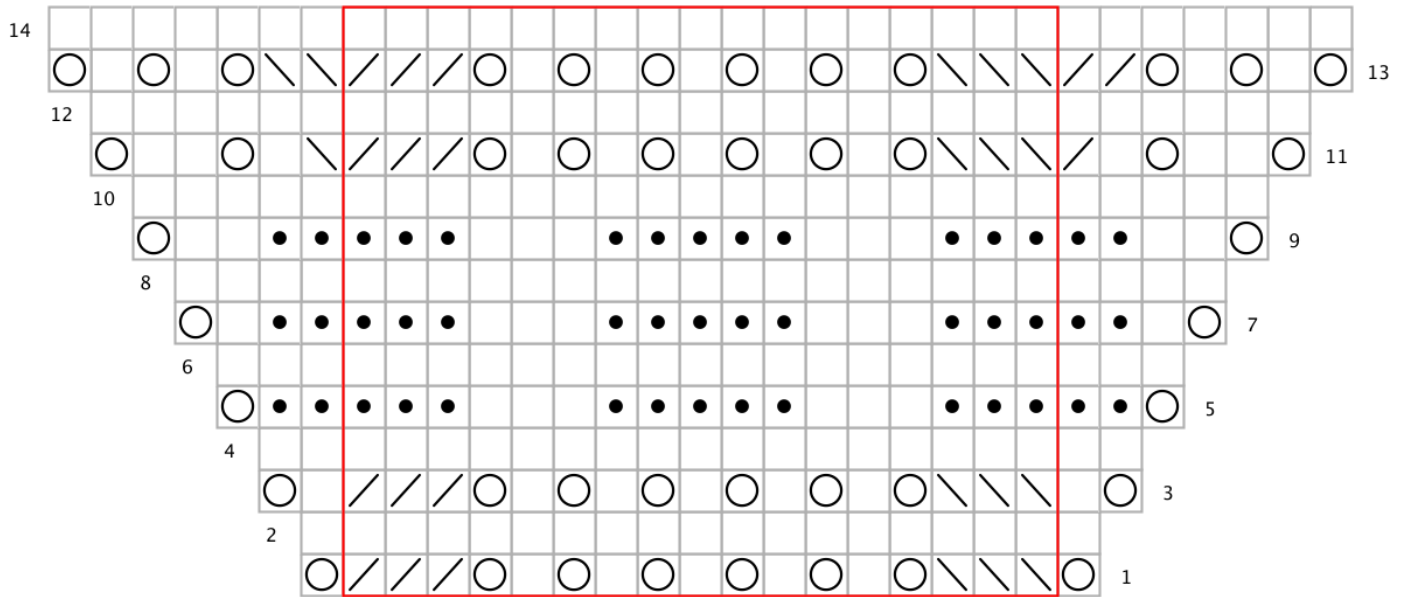
Set-Up









Textured Pattern



Lace Edging



-  RS: knit
WS: purl
-  yo
-  RS: ssk
WS: p2tog tbl
-  RS: k2tog
WS: p2tog
-  RS: purl
WS: knit
-  RS: slip purlwise with yarn in front
WS: slip purlwise with yarn in back



PATTERN NOTES

Stitch counts in the pattern are for half of the shawl, between markers 1 and 2, or 3 and 4.

For high-res images of the shawl visit www.arohaknits.com/explorer-shawl

SHAWL CONSTRUCTION

RS Rows: K3, sm, work Stitch Pattern, sm, k1, sm, work Stitch Pattern, sm, k3.

WS Rows: K3, sm, work Stitch Pattern, sm, p1, sm, work Stitch Pattern, sm, k3.

PATTERN

CO on 3 sts. Knit 6 rows. Turn work 90 degrees, pick up 3 sts (use the purl ridges to pick up the stitches). Turn work 90 degrees again, pick up 3 sts (these picked up sts will be at the cast on edge). You have 9 sts on the needle.

Set-Up Row (WS): K3, pm1, p1, pm2, p1, pm3, p1, pm4, k3.

Section 1

See Pattern Notes for Shawl Construction

- Work rows [5-12] of the written instructions, OR work the rows [1-8] of the set-up chart one time (9 sts).
- Then work Textured Pattern rows [1-12] 10 times (265 sts).
- Then lastly, work Textured Pattern rows [1-10] once.
- On row 8, work k3, sm, p until three sts from m, p2tog, p1, sm, p1, sm, p1 p2tog, p until m, sm, k3. (279 sts).
- On row 10, work k3, sm, p1, p2tog, p until three sts from m, p2tog, p1, sm, p1, sm, p1, p2tog, p until three sts from m, p2tog, p1, sm, k3. (279 sts).

Section 2

See Pattern Notes for Shawl Construction

Work Lace Edging rows [1-14] (307 sts). BO using the Picot BO method: CO three sts using the cable cast-on method and BO six sts. Slip the one st. on the right needle back onto the left and repeat from CO. Continue until all sts have been bound off. Clip yarn and pull tail through rem st.

Weave in ends and block shawl to measurements.



AROHA KNITS
TRANSFORM YOUR YARN





STITCH COUNTS

Half Stitch Count	Full Stitch Count	After working row...
3	13	2 (6)
5	17	4 (8)
7	21	6 (10)
9	25	8 (12)
11	29	2
13	33	4
15	37	6
17	41	8
19	45	10
21	49	12
23	53	2
25	57	4
27	61	6
29	65	8
31	69	10
33	73	12
35	77	2
37	81	4
39	85	6
41	89	8
43	93	10
45	97	12
47	101	2
49	105	4
51	109	6
53	113	8
55	117	10
57	121	12

59	125	2
61	129	4
63	133	6
65	137	8
67	141	10
69	145	12
71	149	2
73	153	4
75	157	6
77	161	8
79	165	10
81	169	12
83	173	2
85	177	4
87	181	6
89	185	8
91	189	10
93	193	12
95	197	2
97	201	4
99	205	6
101	209	8
103	213	10
105	217	12

107	221	2
109	225	4
111	229	6
113	233	8
115	237	10
117	241	12
119	245	2
121	249	4
123	253	6
125	257	8
127	261	10
129	265	12
131	269	2
133	273	4
135	277	6
136	279	8
136	279	10
138	283	2
140	287	4
142	291	6
144	295	8
146	299	10
148	303	12
150	307	14

Note: half stitch counts are only counted between markers 1 and 2, 3 and 4 and do not include the k3 garter stitch borders or the center spine stitch.